

# 形 Y92F-52

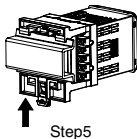
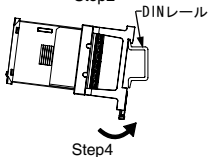
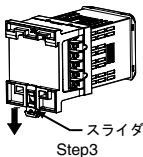
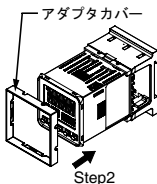
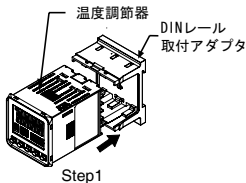
# OMRON

## DINレール取付アダプタ

### JPN

### 取扱説明書

## ■ 取り付け



- Step1: 温度調節器の配線後、アダプタの“UP”マーク方向と温度調節器の天地方向が合うように向きを合わせ、DINレール取付アダプタに温度調節器を取り付けてください。端子カバーとの併用は出来ません。端子カバーを外してご使用ください。
- Step2: アダプタカバーをDINレール取付アダプタに取り付けてください。
- Step3: スライダを下へ引いてください。
- Step4: DINレールに取り付けてください。
- Step5: スライダをカチッと音が鳴るまで戻して、DINレールに固定してください。

2216252-1B

# Y92F-52

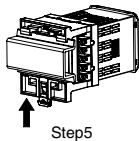
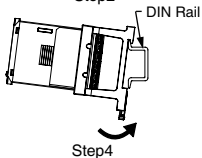
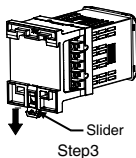
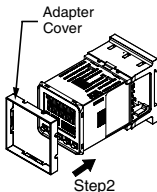
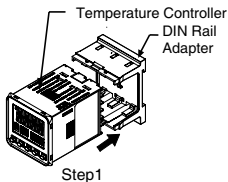
DIN Rail Adapter

OMRON

EN

Instruction Manual

## Mounting



- Step1: Make sure the temperature controller is wired completely firstly, then keep the mark "UP" up, insert the temperature controller into the DIN rail adapter until the DIN rail adapter is firmly fixed on the temperature controller. The DIN Rail adapter cannot be used with the Terminal Cover. Please use it without the Terminal Cover.
- Step2: Push the adapter cover into the temperature controller, fix it with the DIN rail adapter closely.
- Step3: Push the slider down.
- Step4: Put the DIN rail adapter on the DIN rail.
- Step5: Reset the slider and fix to the DIN rail.

2216252-1B